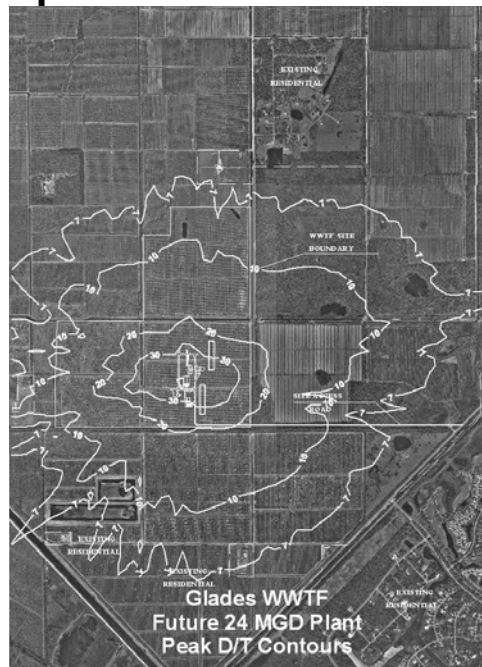


GLADES WASTEWATER TREATMENT FACILITY ODOR DISPERSION MODELING PORT ST. LUCIE, FL

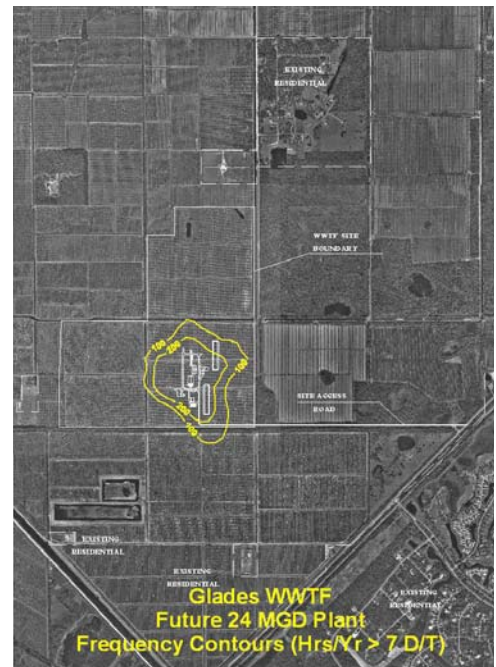
WEA performed an odor dispersion modeling study for the planned 6 MGD Glades WWTF near Port St. Lucie, FL in 2003 for Arcadis Reese, Macon & Associates. The study was performed during the early design stages to simulate the potential odor impact of the plant on existing and future development surrounding the plant. Odor modeling was performed simulating the planned 6 MGD base plant and future 12 and 24 MGD plant expansions. Odor impacts considering alternative design concepts were also evaluated using the modeling. Minimal odor impacts beyond the fence line were predicted for the 6 and 12 MGD scenarios. WEA recommended consideration of an additional odor study prior to designing the 24 MGD plant to determine if additional odor control measures may be required at that time. Regulatory requirements were met on the project.

FINAL PROJECT SCORECARD

- Odor sources identified and prioritized
- Modeling for current residences and future development
- Results indicated minimal odor impact from 6 & 12 MGD plants
- Recommended odor study prior to 24 MGD plant expansion



Peak D/T Contours



Frequency Contours